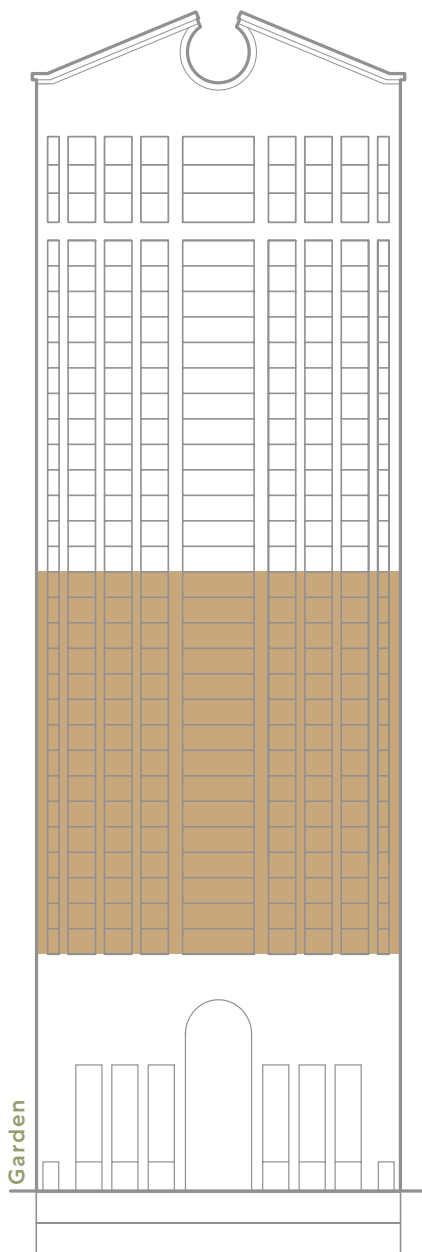
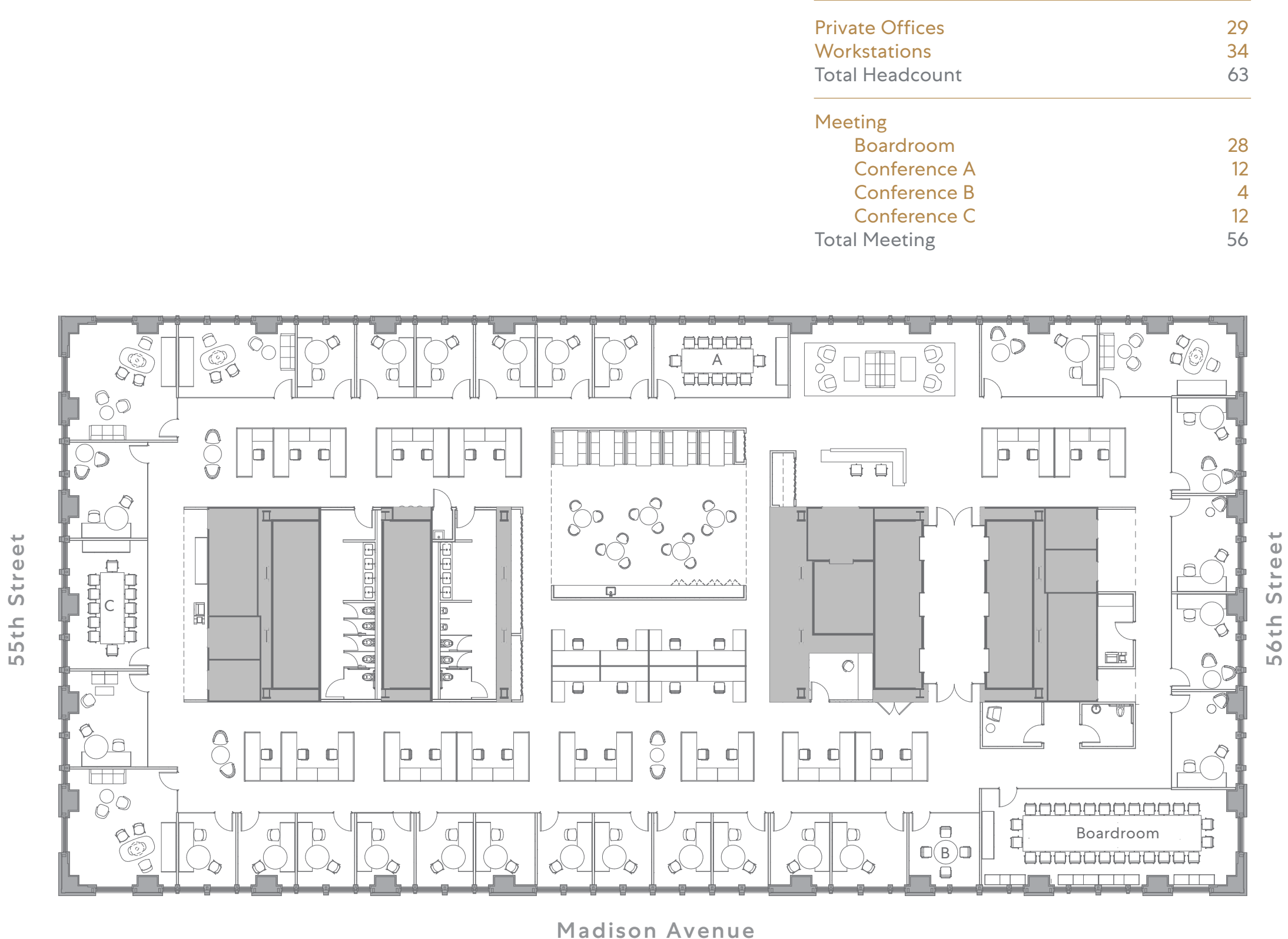


CITYSCAPE PERIMETER PLAN

Floors 10 - 25



Garden



| | |
|------------------------|-----------|
| Private Offices | 29 |
| Workstations | 34 |
| Total Headcount | 63 |

| | |
|----------------------|-----------|
| Meeting | |
| Boardroom | 28 |
| Conference A | 12 |
| Conference B | 4 |
| Conference C | 12 |
| Total Meeting | 56 |

